



NFATc2IP Polyclonal Antibody

| | |
|---------------------------|--|
| Catalog No | YP-Ab-01897 |
| Isotype | IgG |
| Reactivity | Human;Rat;Mouse;;Fish |
| Applications | WB;IHC |
| Gene Name | NFATC2IP |
| Protein Name | NFATC2-interacting protein |
| Immunogen | The antiserum was produced against synthesized peptide derived from human NFATC2IP. AA range:151-200 |
| Specificity | NFATc2IP Polyclonal Antibody detects endogenous levels of NFATc2IP protein. |
| Formulation | Liquid in PBS containing 50% glycerol, 0.5% BSA and 0.02% sodium azide. |
| Source | Polyclonal, Rabbit,IgG |
| Purification | The antibody was affinity-purified from rabbit antiserum by affinity-chromatography using epitope-specific immunogen. |
| Dilution | WB 1:500-2000;IHC-p 1:50-300 |
| Concentration | 1 mg/ml |
| Purity | ≥90% |
| Storage Stability | -20°C/1 year |
| Synonyms | NFATC2IP; NIP45; NFATC2-interacting protein; 45 kDa NF-AT-interacting protein; 45 kDa NFAT-interacting protein; Nuclear factor of activated T-cells; cytoplasmic 2-interacting protein |
| Observed Band | 48kD |
| Cell Pathway | Nucleus . Cytoplasm . TRAF1 is associated with a fraction of NFATC2IP in the cytoplasm and prevents its translocation to the nucleus. . |
| Tissue Specificity | Brain,Epithelium,Eye,Liver, |
| Function | function:Plays a role in the inducible expression of cytokine genes in T-cells, especially by increasing NFAT-driven IL-4 production.,PTM:Methylation at the N-terminus by PRMT1 modulates interaction with the NFAT complex and results in augmented cytokine production.,similarity:Contains 1 ubiquitin-like domain.,subcellular location:TRAF1 is associated with a fraction of NFATC2IP in the cytoplasm and prevents its translocation to the nucleus.,subunit:Interacts with NFATC2, TRAF1, TRAF2 and PRMT1., |
| Background | function:Plays a role in the inducible expression of cytokine genes in T-cells, especially by increasing NFAT-driven IL-4 production.,PTM:Methylation at the N-terminus by PRMT1 modulates interaction with the NFAT complex and results in augmented cytokine production.,similarity:Contains 1 ubiquitin-like domain.,subcellular location:TRAF1 is associated with a fraction of NFATC2IP in |

the cytoplasm and prevents its translocation to the nucleus.,subunit:Interacts with NFATC2, TRAF1, TRAF2 and PRMT1.,

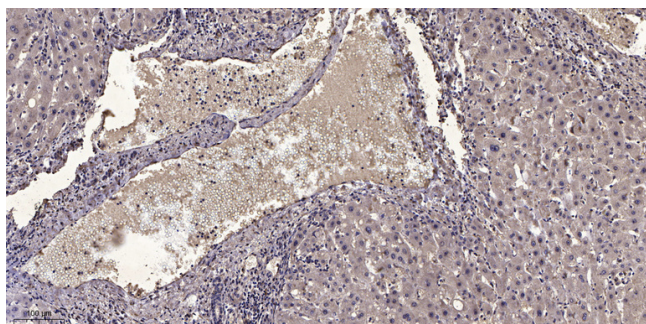
matters needing attention

Avoid repeated freezing and thawing!

Usage suggestions

This product can be used in immunological reaction related experiments. For more information, please consult technical personnel.

Products Images



Immunohistochemical analysis of paraffin-embedded human liver cancer. 1, Antibody was diluted at 1:200(4° overnight). 2, Tris-EDTA,pH9.0 was used for antigen retrieval. 3,Secondary antibody was diluted at 1:200(room temperature, 45min).